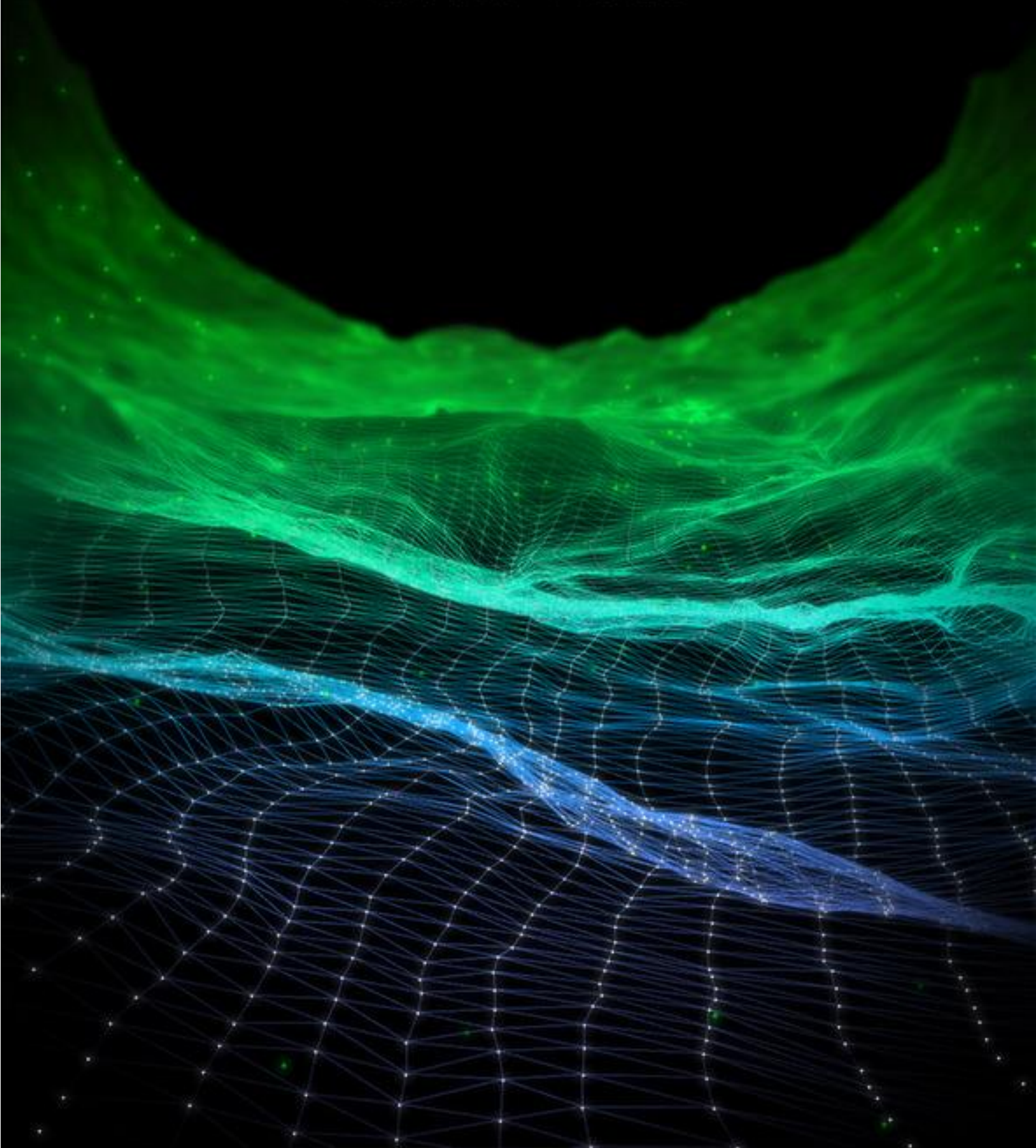


PaleoScan™ 2018

Release Notes



Copyright Notice

All rights reserved. No part of this document may be reproduced, stored in a retrieval system, or translated in any form or by any means, electronic or mechanical, including photocopying and recording, without the prior written permission of Eliis SAS, 187 rue Helene Boucher, 34170 Castelnau-le-Lez, FRANCE.

Disclaimer

The use of this product is governed by the PaleoScan™ Software License Agreement. Eliis makes no warranty, expressed, implied, or statutory, with respect to the product described herein and disclaims without limitation any warranty of merchantability or fitness for a particular purpose. Eliis reserves the right to revise the information in this manual at any time without notice.

Contact

For any information request, you can contact us

Web: www.eliis.fr

France

Eliis S.A.S
Parc Mermoz
187, rue Hélène Boucher
34170 Castelnau-le-Lez

Phone: +33 (0) 4.67.41.31.16
Email: contact@eliis.fr

USA

Eliis Inc.
One BriarLake Plaza, Suite 175
2000 W. Sam Houston Pkwy
Houston, Texas 77042

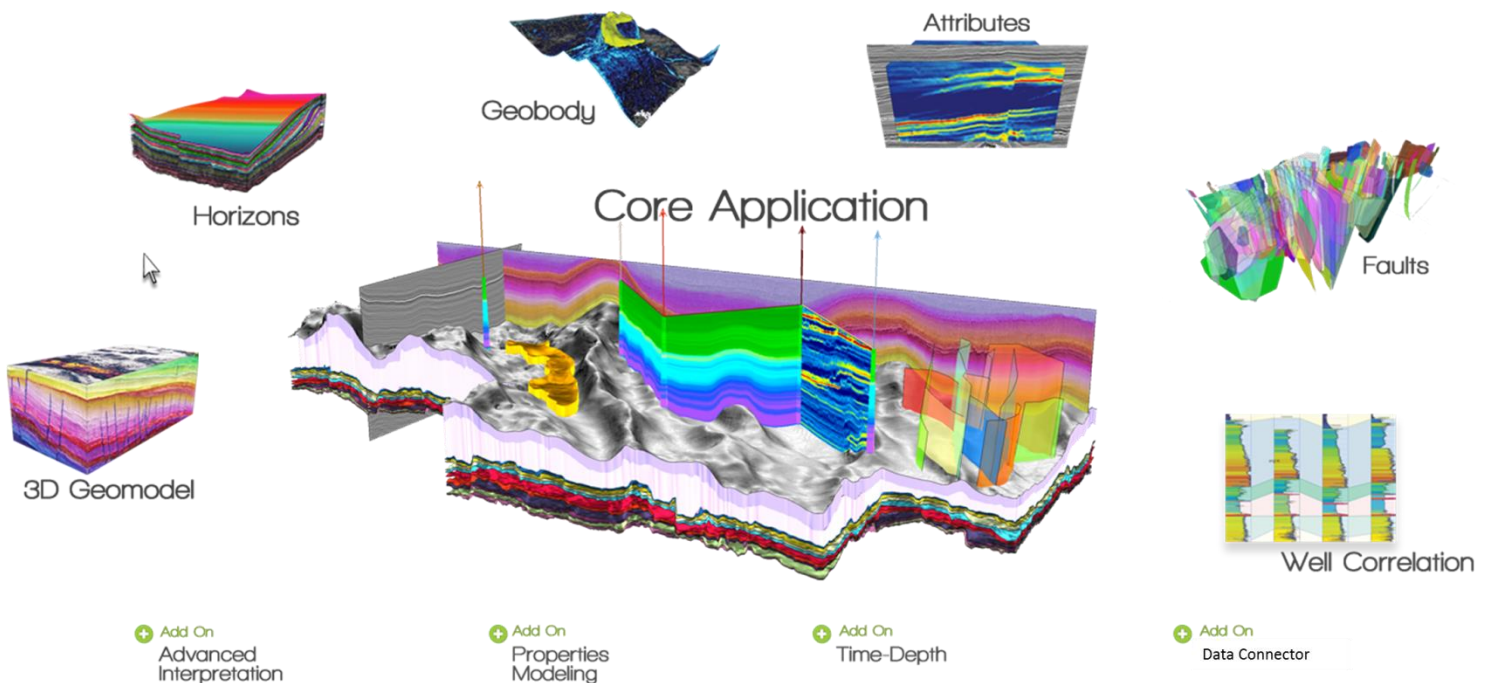
Phone: +1 281 404 1515
Email : contact-us@eliis.fr

PaleoScan™ 2018

PaleoScan™ 2018 is a new generation of 3D seismic interpretation software, where geoscientists build a geological model while interpreting seismic volumes. With this new release, Eliis continues to innovate in seismic interpretation and brings more tools to interpret larger seismic data sets, with added speed and precision.

This document lists all the new features upgrades and corrections implemented in Paleoscan™ Data Connector 2018.

The 2018 release brings more options to complete the workflow from the exploration to the reservoir characterization, with various new tools: complete 2D interpretation workflow, velocity modeling, cross plots from logs, coordinates reference system management...



PaleoScan™ Data Connector 2018

Project management

Feature	Description
New Project	When creating a new PaleoScan™ project, a CRS can be specified: <ul style="list-style-type: none"> - The current Petrel project CRS. - A CRS from a predefined list. - No CRS.
Remove message	Remove an inappropriate message "Project is obsolete" that appeared in the Petrel console when the plugin was closed.

Petrel® to PaleoScan™

Feature	Description
Volume	CRS of the volume is now exported and assigned to the volume in PaleoScan™.
Horizon	Can now export 2D horizon interpretations as 2D Horizons in PaleoScan™. The CRS of the Petrel® horizon will be preserved within the PaleoScan™ horizon.
Regular Surface	The CRS of the Petrel® regular surface will be preserved within the PaleoScan™ horizon.
Fault	The CRS of the Petrel® fault will be preserved within the PaleoScan™ fault set.
Borehole	The CRS of the Petrel® borehole will be preserved within the PaleoScan™ well and logs.
Well Top	If the marker set already exists in PaleoScan™, it now creates a new one with a unique name instead of erasing the existing one. The exported well tops now take the CRS of the PaleoScan™ parent Well.
Culture Data	The CRS of the Petrel® culture data will be preserved within the PaleoScan™ culture.

2D Line	Multi Seismic 2D Lines can be exported by selecting 2D survey thanks to a new 2D seismic survey field.
	The CRS of the Petrel® lines will be preserved within the PaleoScan™ 2D lines.

PaleoScan™ to Petrel®

Feature	Description
Volume	The CRS of the PaleoScan™ Volume will be preserved within the Petrel® Volume.
2D Fault	Can now import 2D fault sets as 3D fault interpretations in Petrel®.
2D Line	New parameters: can now define either the 3D Seismic or the 2D Seismic Survey which will be associated to the 2D Lines.
2D Line Set	Can now import 2D line sets as several 2D lines.

Licensing

The PaleoScan™ Data Connector 2018 is included as an add-on module to PaleoScan™ 2018. It can be downloaded from Eliis web site. A personal user account is required. If you do not have a login and password to access Eliis extranet, you can fill up this [form](#).

Eliis provides you a free 30-day temporary license to evaluate PaleoScan™ 2018 including the Petrel® plug-in. The temporary license will give you a full access to the software with all add-on modules.

Compatibility

The PaleoScan™ Data Connector 2018 is only compatible with Petrel® 2017 and PaleoScan™ 2018:

PaleoScan™ Data Connector 2018	
Required PaleoScan™ versions	Required Petrel® versions
PaleoScan™ 2018 (64-bit) and above	Petrel® 2017 (64-bit)

contact@eliis.fr - ☎ +33(0) 4.67.41.31.16