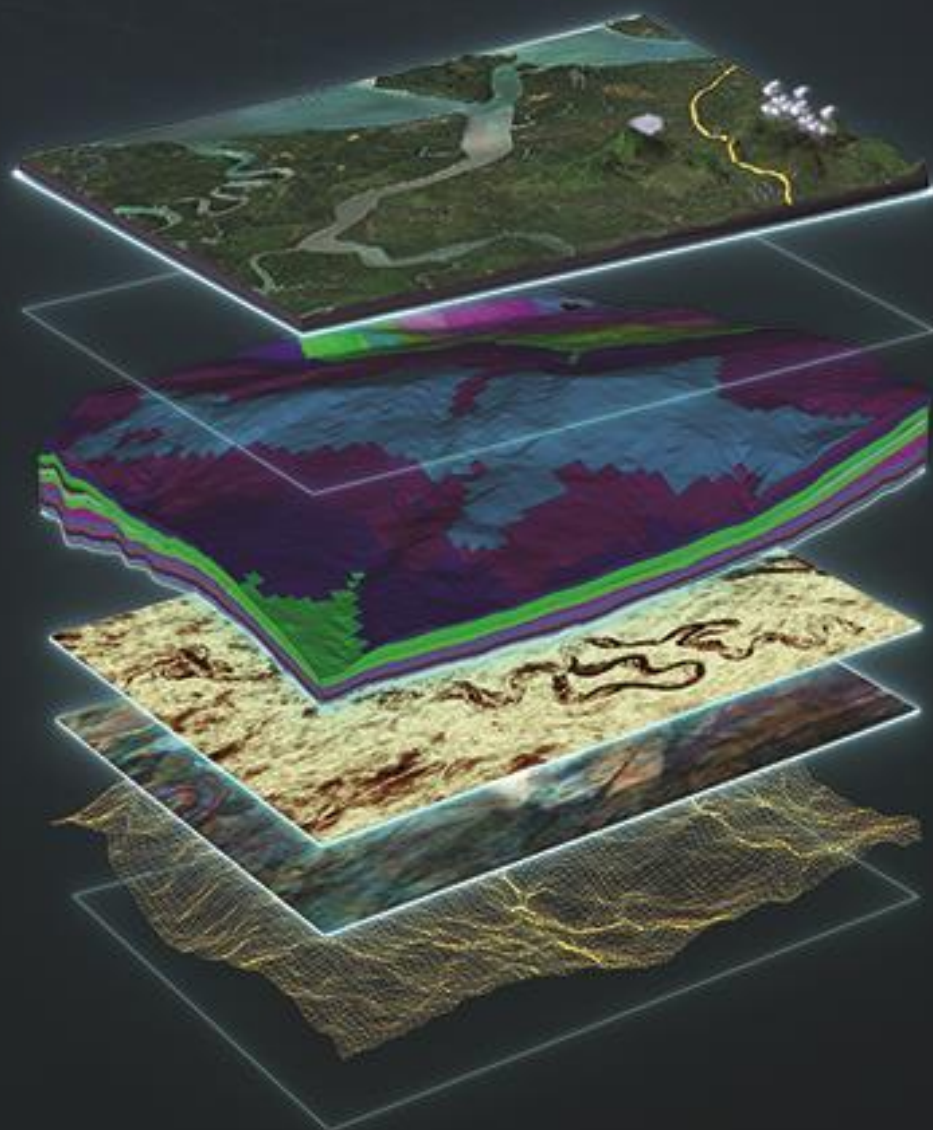


PALEOSCAN™  
2019

DATA CONNECTOR  
RELEASE NOTE

Petrel®



Global Seismic Interpretation Software



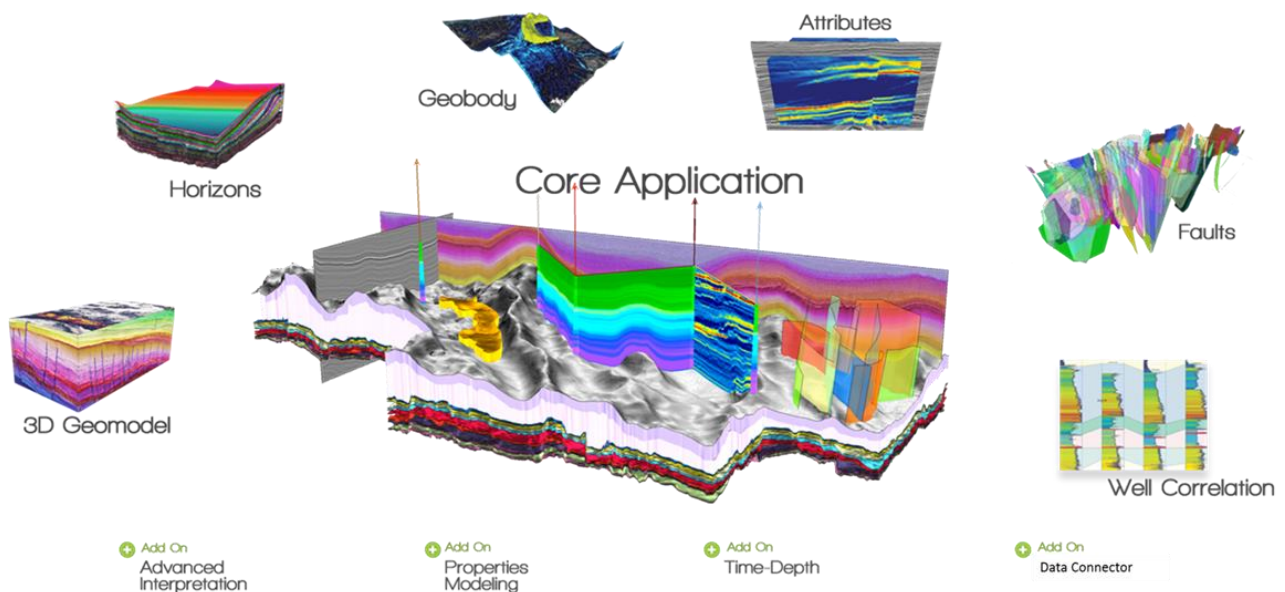
# PaleoScan™ 2019

PaleoScan™ is a new generation of 3D seismic interpretation software, where geoscientists build a geological model while interpreting seismic volumes. With this new release, Eliis continues to innovate in seismic interpretation and brings more tools to interpret larger seismic datasets, with added speed and precision.

The 2019 version includes all updates counted in the last version and features new and improved tools for a better support of data constraints.

- **Automatic Fault Extraction**, now part of our Core application, has never given such a precise fault network.
- Upgraded Advanced Interpretation module with two awaited items, mainly our static **Geocellular model** and its reservoir properties gridding. Both, with **Stratigraphic terminations management** in sequences, will allow a better handling of geologic architectures.
- As a new Extension, **Python** code can now be executed directly from PaleoScan™ 2019, allowing you to tailor your software according to your needs.

This document lists all the new features, upgrades and corrections implemented in PaleoScan™ 2019. A detailed description of each tool can be found in the “New Features Guide” or on the web site ([www.eliis.fr](http://www.eliis.fr)).



# PaleoScan™ Data Connector 2019.1.0

---

## Petrel® to PaleoScan™

| Feature                | Description   |
|------------------------|---|
| Volume                 | Improvement volume export speed   |
|                        | Fix NaN value management during volume export                             |
| 2D Line                | Improvement 2D lines export speed   |
| Triangle Meshed Object | Fix Triangle Mesh export issue - written file was locked                  |
| Well Tops              | Improve Well Tops export  |
| Horizon                | Improve horizon naming during export (special characters and name length) |

## Licensing

---

The PaleoScan™ Data Connector 2019 is included as an add-on module to PaleoScan™ 2019. It can be downloaded from Eliis web site. A personal user account is required. If you do not have a login and password to access Eliis extranet, you can fill up this [form](#).

Eliis provides you a free 30-day temporary license to evaluate PaleoScan™ 2019 including the Petrel® plug-in. The temporary license will give you a full access to the software with all add-on modules.

## Compatibility

---

The PaleoScan™ Data Connector 2019 is only compatible with Petrel® 2018 and PaleoScan™ 2019:

| PaleoScan™ Data Connector 2019     |                           |
|------------------------------------|---------------------------|
| Required PaleoScan™ versions       | Required Petrel® versions |
| PaleoScan™ 2019 (64-bit) and above | Petrel® 2018 (64-bit)     |

## Copyright Notice

All rights reserved. No part of this document may be reproduced, stored in a retrieval system, or translated in any form or by any means, electronic or mechanical, including photocopying and recording, without the prior written permission of Eliis SAS, 3 Rue Jean Monnet, 34830 Clapiers, FRANCE.

## Disclaimer

The use of this product is governed by the PaleoScan™ Software License Agreement. Eliis makes no warranty, expressed, implied, or statutory, with respect to the product described herein and disclaims without limitation any warranty of merchantability or fitness for a particular purpose. Eliis reserves the right to revise the information in this manual at any time without notice.

## Contact

For any information request, you can contact us.

Web: [www.eliis.fr](http://www.eliis.fr)

### Europe - Montpellier

Eliis SAS

[contact@eliis.fr](mailto:contact@eliis.fr)

+33 (0) 4.67.41.31.16

### North America - Houston

Eliis Inc.

[contactus@eliis.fr](mailto:contactus@eliis.fr)

+1 281 404 1515

### Australia - Perth

Eliis Pty Ltd

[contactau@eliis.fr](mailto:contactau@eliis.fr)

+61 466 303 546

### Malaysia – Kuala Lumpur

Eliis Sdn Bhd

[contactmy@eliis.fr](mailto:contactmy@eliis.fr)

+60 162 072 710

### Brazil – Rio de Janeiro

Eliis Ltda

[contactbr@eliis.fr](mailto:contactbr@eliis.fr)

+55 (21) 99575-0071

### China - Beijing

Geoseismic Signal Corporation

[tonyqiu@gssgeo.com](mailto:tonyqiu@gssgeo.com)

+86 10 8478-3912

### Mexico - Merida

Apogee

[info@apogeegeo.com](mailto:info@apogeegeo.com)

+52 1.993.113.6525

### Senegal - Dakar

WellCome Energy Services

[olivier.malinur@eliis.fr](mailto:olivier.malinur@eliis.fr)